

POTENTIOMETERS

LINEAR POTS WITH 1/4" DIA. SHAFT

All of the following pots have 1/4" dia. shafts and 3/8" dia. (3/8-32) or 7mm threaded bushings, unless otherwise specified. Shafts may be full-round, half-round or knurled.

10 meg **CAT# LTP-10M** 75¢ each
 15 meg **CAT# LTP-15M** 75¢ each



10K 5W POT

Centralab #WW103 10K.
 10K linear taper, 5W wirewound pot.
 1/4" dia. shaft is 2.6" long. Solder-loop terminals.
CAT# PTP-10K \$2.00 each



25K OHM LINEAR TAPER POT

10mm long x 1/4" diameter
 full-round shaft.
CAT# LTP-253 85¢ each



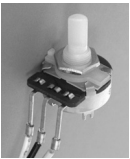
100K SCREWDRIVER ADJUST

100K linear taper. Screwdriver adjust
 1/4" shaft. 3/8-32 threaded bushing.
 Solder terminals.
CAT# LTP-100K \$1.00 each



75K LINEAR TAPER POT

1/4" diameter flatted nylon shaft,
 1/2" long. 3/8" diameter threaded
 nylon bushing. Prepped with three
 6.5" leads.
CAT# LTP-75K 75¢ each



AUDIO TAPER POTS W/ 1/4" DIA. SHAFT

5K AUDIO TAPER POT W/ SWITCH

1/2 moon shaft. 9mm non-threaded bushing.
 Tabs, approximately 1" apart, snap-mount into
 chassis. On-off switch, rated 3A/125Vac,
 activates at end of counter-clockwise
 rotation. Solder terminals.
CAT# ATPS-5K 75¢ each



All of the following pots have 1/4" dia. shafts and 3/8" dia. (3/8-32) or 7mm threaded bushings, unless otherwise specified. Shafts may be full-round, half-round or knurled.

50K **CAT# ATP-50K** 75¢ ea.
 100K **CAT# ATP-100K** 75¢ ea.

250K **CAT# ATP-254** 85¢ each
 1M **CAT# ATP-105** 85¢ each



PC MOUNT POTS

No mounting bushing.
 Bend tabs for support.

50K AUDIO POT

6mm split knurled shaft is 16mm long.
CAT# APP-50KA 50¢ each



500 OHM LINEAR TAPER

1/4" knurled split shaft. 0.63" long.
CAT# LPP-500 50¢ each • 10 for 45¢ each

2 MEG OHM AUDIO POT

1/4" flatted nylon shaft is 0.87" long.
CAT# APP-2M 50¢ each

50K AUDIO POT

1/4" flatted nylon shaft. 0.91" long.
CAT# APP-50K 50¢ each



POTS WITH 6MM DIA. SHAFT

1K LINEAR TAPER POT

with 6mm dia. knurled split shaft,
 15mm long. 7mm threaded bushing.
 PC pins, can be wrapped and soldered.
CAT# LPP-1K 75¢ each



5K LINEAR POT

6mm knurled, split shaft x 10mm long.
 7mm threaded bushing. PC pin terminals
 (can be wrapped and soldered).
CAT# LPP-5K \$1.00 each



5K LINEAR POT

6mm knurled shaft.
 9.5mm diameter threaded
 bushing. Looks like a dual
 potentiometer, but the
 front element has only two
 leads, neither of which appears to be
 influenced by rotation of the shaft.
 Prepped with 3" leads.
CAT# PTL-5K 65¢ each



10K LINEAR PRECISION POT

Tokos / Cosmos# RV Q24YN 15F B 103.
 High-quality, 10K Ohm, 1/4W carbon
 film potentiometer designed for long-life.
 Very smooth, precise rotation, designed
 for 500,000 cycles. 6mm diameter x 5mm
 long flatted shaft. 9mm threaded bushing.
 24mm diameter body. Solder-lug terminals.
CAT# LPT-10K \$2.50 each
 10 for \$2.25 each • 100 for \$1.90 each



500K TAPER POT, 6MM SHAFT

6mm diameter x 10mm split
 knurled shaft. 8mm diameter x
 10mm threaded bushing.
 AUDIO **CAT# ATP-500K** 75¢ each
 LINEAR **CAT# LPP-500K** 75¢ each



500K LINEAR TAPER, DUAL POT

6mm dia. flatted shaft, 20mm long.
 8mm threaded bushing. PC pins.
 Mounting tabs on 12mm centers.
CAT# PL-500KD \$1.15 each
 10 for \$1.00 each



100K LINEAR TAPER POT

6mm split knurled shaft is 8mm long.
 3/8" threaded mounting bushing on top
 of a 0.7" long brass hex spacer.
CAT# LTP-100KL 65¢ each



175K LINEAR TAPER POT

Standard 3/8" threaded bushing.
 6mm diameter knurled, split shaft.
 Solder terminals.
CAT# LTP-175K \$1.00 each



1.2K OHM AUDIO TAPER POTS

6mm diameter shaft. 8mm diameter threaded
 bushing. Solder-loop terminals. Shaft is
 44mm long; 17mm end is nylon, half-moon.
CAT# ATP-1.2K 75¢ each
 Center-detent
CAT# ATP-1.2KD 75¢ each



50K AUDIO TAPER POT

6mm split knurled shaft,
10mm long. 7mm threaded bushing.

CAT# PTT-50K 85¢ each



250K DUAL AUDIO TAPER POT

Dual element potentiometers.
6mm diameter split knurled shaft,
10mm long. 3/8-32 threaded bushing.
Solder-lug terminals.

CAT# PA-250K 95¢ each



250K AUDIO POT W/ SWITCH

250K Ohm, audio taper pot with
DPDT, push-pull switch. 6mm
knurled, split shaft. 8mm dia. threaded
bushing is 13mm long. New pots - prepped
with wires and a 9V battery snap.

CAT# ATPS-250K \$1.00 each



POTS W/ 6MM DIA. SHAFT

6mm flatted shaft. 7mm threaded bushing.

10K AUDIO TAPER

CAT# SPA-10K 85¢ each

DUAL 10K AUDIO TAPER

CAT# DPA-10K \$1.00 each

DUAL 10K LINEAR TAPER

CAT# DPL-10K \$1.00 each



POTS W/ 1/8" DIA. SHAFT

10K AUDIO POT W/ S.P.S.T. ON-OFF SWITCH

1/8" flatted shaft. 1/4" threaded
bushing is 0.75" long. Solder-loop
terminals. Exterior traces of oxidation due to
storage conditions, but appear to be functional.

CAT# POTS-10KA \$1.00 each



100K LINEAR TAPER POT

Centralab miniature potentiometer.
0.20" long shaft. 0.25" threaded
bushing. Solder-loop terminals.

CAT# MLP-100K 75¢ each



100K AUDIO TAPER POT

Clarostat RV6 / 392 - type 100K Ohm, audio
taper potentiometer. 1/8" diameter x 0.5" long
shaft. 1/4" diameter threaded bushing.
0.5" dia. x 0.5" body. Solder-loop terminals.

CAT# ATP-123 \$1.50 each



50K AUDIO TAPER POT

Allen Bradley Type W #2100-4-14. 50K Ohm,
audio taper. 1/8" dia. x 1/4" long shaft.
1/4" dia. threaded bushing. 1/2" dia. body.
Gold-plated solder terminals.

CAT# ATP-503 \$1.50 each

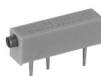


PRECISION MULTI-TURN TRIMMERS

RECTANGULAR TRIMMER

0.75" X 0.19" high. 3/4 watt.
Comparable to Bourns 3006P,
Beckman 89PR, Weston 830P, AB 94P
200, 500, 2.2K, 10K, 20K

CAT# RTP-xxx \$1.25 each (xxx = resistance)



15K 15 TURN TRIMMER

Weston 503 1009. 3/8" square,
side-adjust, 15-turn precision trimmer.
In-line pc pins on 0.1" centers.

CAT# PTR-15K \$1.25 each



MULTITURN TRIMMER POT

Precision 20-turn trim pot. 3/8" square, top-
adjust. Leads in straight row on 0.10" centers.
500, 5K, 10K, 20K, 50K

CAT# MTPS-XXX \$1.25 each (xxx = resistance)



PC MOUNT POTS

6mm diameter shafts,
0.5" long minimum.
Non-threaded bushing.



Resistance	Taper	Other desc	CAT #
5K	Audio		PA-5K
10K	Audio	Dual pot	APD-10K
10K	Linear		LP-10KC2
10K	Linear	Dual pot	NDLP-10K
10K	Linear	Dual pot	PL-10KD
50K	Linear		LPC-50K
100K	Audio	Dual pot	APD-100K
500K	Audio	Dual pot	PA-500KD
1M	Audio	Dual pot	PA-1MD

All pots above are 4 pcs of one CAT# for \$1.00
100 pcs of one CAT# \$15.00 (no mixing)

SINGLE TURN TRIMMERS

10K ALLEN BRADLEY TRIMMER

Allen Bradley Type E. 10K Ohm, single-turn
trimmer potentiometer. 10mm square.
PC leads in triangular pattern,
5mm centers w/ wiper lead in middle.

CAT# TRP-10K 2 for \$1.00



SINGLE TURN TRIMMER POTS

7mm square trimmer. Two leads are on
5mm centers. Middle (wiper) lead is 5mm
from the center of the other leads. Available
values: 500, 5K, 10K, 20K, 50K, 100K, 150K, 500K

CAT# TPS-XX or XXX (no mixing values)

XXX=value in ohms, ie TPS-10K

4 for \$1.00 • 100 for 18¢ each



1K VERTICAL ADJUST TRIMMER

Piher #PT10LV0 1K 20%. 10mm dia. cermet
trimmer. Outer PC pins on 5mm centers.

CAT# TPR-1K 5 for \$1.00 • 100 for 15¢ ea.



TOP ADJUST

3/8" square X 3/16" high. 1/2 watt.
Comparable to Bourns 3386P, Beckman
72PR and Spectrol 63P. 500, 50K

CAT# STP-xxx 75¢ each



TRIMMERS

3-pins, triangular pattern. 0.2" between outer pins.

10K **CAT# TPT-10K**

2.2K **CAT# VTP-2.2K**

4.7K **CAT# VTP-4.7K**



10 for \$1.00 • 100 for \$7.00

100 OHM TRIMMER POT

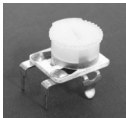
0.26" square, screwdriver adjust
potentiometer. Unusual lead configuration.
The two outside leads are 0.82" long while
the center lead is a standard length pc lead.
The two rear leads are on 0.15" centers.

CAT# TP-100 10 for \$1.00 • 100 for \$7.00



300K OHM THUMBWHEEL TRIMMER POT

300K Ohm, pc mount trimmer. 0.47" diameter plastic thumbwheel for easy hand adjustment. Mounts on pc board with wheel facing up. Four legs.
CAT# TP-300K 3 for \$1.00



200 OHM TRIMMER POT

Old-style pc style trimmers. 0.6" dia. thumbwheel adjuster. Two pc leads on 0.30" centers with two bend-tab wiper terminals.
CAT# TPT-201 10 for \$1.00



1 MEG OHM THUMBWHEEL TRIM POT

0.7" dia., old-style trim pot. PC leads on 0.4" centers. Center wiper terminal is on opposite side from other leads.
CAT# TPT-1M 10 for \$1.00
 100 for 6.5¢ each • 500 for 4¢ each



32 OHM WIRE-WOUND TRIMMER POT

20mm dia. Screwdriver adjust. Two mounting ears with holes on 1" centers.
CAT# TPW-32 50¢ each



5K WIRE-WOUND TRIMMER

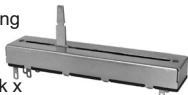
Screwdriver adjust. Horizontal pc mount. 19.5mm dia. x 11mm thick. Pins on 0.25" centers.
CAT# TPW-5K 3 for \$1.00



SLIDE POTS

SLIDE POTS, 65MM TRAVEL

Slide potentiometers with mounting holes on 80mm centers. Slide travel, 65mm. Overall length, 88mm. Metal sliders, 1.2mm thick x 3.5-4mm at tip. Single-element if not otherwise noted. "C-detent" indicates a center-detent, a tactile bump in the center of slide travel.



Res.	Taper	Desc	CAT#	Price	10±
10K	Linear	4-element	SLP-10K4	\$1.00	80¢
20K	Linear	C-detent	SLP-20KS	\$1.00	80¢
20K	Linear		SLP-20KL	\$1.00	80¢
50K	Linear	2-ele., C-det.	SLP-50K	\$1.00	80¢
50K	Linear	C-detent	SLP-50KS	\$1.00	80¢
100K	Audio	4-element	SLP-100K4A	\$1.00	80¢
100K	Audio	2-element	SLP-100KA	\$1.00	80¢

20K LINEAR SLIDE POT, OPEN FRAME

Bourns # SSHA20B20300. Low-profile, unenclosed slide potentiometer. 20K Ohms, linear taper. Black plastic slider, 0.85" travel. 0.2" overall thickness when mounted. Four pc leads on 1.17" x 0.33" centers.
CAT# SP-20K 2 for \$1.00



20K OHM SLIDE POTENTIOMETER

Stackpole Slide-trol 119. 20K Ohm, audio taper slide pot. 35mm slide travel. Mounting tabs on 52mm centers. 19mm long x 2.5mm x 3.5mm slider. PC leads.
CAT# SPA-20K 3 for \$1.00 • 100 for 20¢ ea.



5K AUDIO MINI-SLIDE POTENTIOMETER

Small 5K Ohm, audio taper slide pot. Body dimensions, 30 x 8 x 7mm high. Tapped mounting holes on 26mm centers. Slide travel, 17mm. PC terminals.
CAT# SP-5KA \$1.00 each



KNOBS

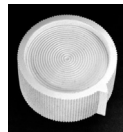
KNOBS FOR 1/4" SHAFT

Black plastic knob for 1/4" round shaft with raised red face, serrated circumference and raised white pointer line down one side. 0.52" diameter x 0.60" high. Brass insert and set screw.
CAT# KNB-124 75¢ each • 10 for 65¢ each



1.1" WHITE POINTER KNOB FOR 1/4" FLATTED SHAFT

1.1" diameter x 0.53" off-white knob. Serrated circumference. Shank extends 0.25" below knob. Metal insert fits 1/4" dia. flatted shaft.
CAT# KNB-245 60¢ each



33MM KNOB FOR FLATTED 1/4" SHAFT

33mm diameter x 12mm high off-white plastic knob for 1/4" flatted shaft. Metal insert.
CAT# KNB-239 50¢ each • 10 for 45¢ each



KNOB FOR 7MM KNURLED SHAFT

Rust-colored knob. Raised pointer bar with white line. 0.71" dia. x 0.78" high.
CAT# KNB-221 50¢ each



KNOBS FOR 6MM FLATTED SHAFT

Good-looking aluminum knob with plastic insert for flatted 6mm shaft. 15mm dia. x 16mm high. Fluted circumference. Brushed aluminum face with pointer groove.
CAT# KNB-243 65¢ each
 10 for 50¢ each • 100 for 40¢ each



KNOBS FOR 1/8" SHAFT

Black plastic knob with raised white pointer line. Brass inserts and set screws. 0.45" dia. skirt at base, 0.31" dia. at top, 0.40" high.
CAT# KNB-127 \$1.10 each
 10 for 95¢ each



18mm diameter x 15.5mm high black phenolic knob with serrated edge and brushed aluminum face. Brass insert with set screw.



CAT# KNB-250 \$1.25 each

Dark-brown plastic knob with metal insert. Fits 1/8" dia. half-round shaft. 0.9" diameter x 0.53" high. Serrated circumference.
CAT# KNB-218 65¢ each



0.5" BLACK ALUMINUM KNOB

Apem # MKCB-500B-1/8-7. Black, machined aluminum control knob. Base is 0.5" dia. x 0.32" high. Top portion of knob is rectangular, 0.49" x 0.22" x 0.44" high. A black pointer groove is etched into one side of knob. Two set screws.
CAT# KNB-231 \$1.50 each
 25 for \$1.35 each • 100 for \$1.15 each

