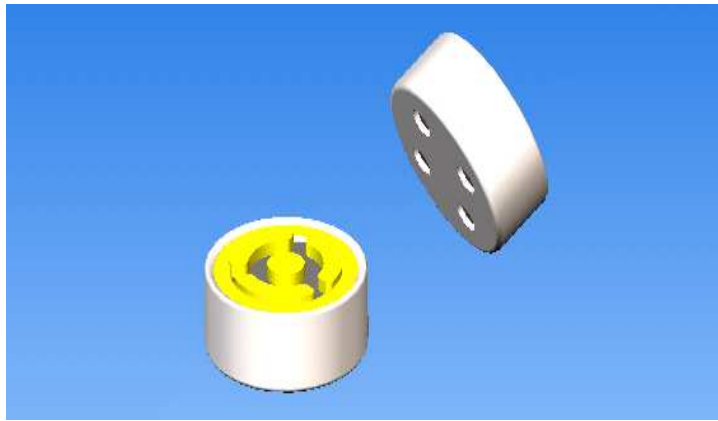


PAGE NO.	Dimension(m m)	Parts Number	Polar Pattern		Connection type			Standard testing condition	Sensitivity (dB)	Built-in electric capacity
			Omnidirectional	Unidirectional	SMD	Soldering Type	Pin Type			
1	φ3.0×1.2	TSS-3012E	◎		◎			2.0V,2.2KΩ	-39 ~ -49	2Cap.
2	φ4.0×1.3	TSS-4012E	◎		◎			2.0V,2.2KΩ	-39 ~ -49	2Cap.
3	φ3.0×1.5	TSB-3015A	◎			◎		2.0V,2.2KΩ	-39 ~ -49	2Cap.
4	φ4.0×1.5	TSB-4015A/ BP	◎			◎	◎	2.0V,2.2KΩ	-33 ~ -49	2Cap.
5	φ6.0×1.8	TSB-6018A	◎			◎		2.0V,2.2KΩ	-29 ~ -47	2Cap.
6	φ6.0×2.2	TSB-6022A/ BP	◎			◎	◎	2.0V,2.2KΩ	-29 ~ -47	2Cap.
7	φ6.0×2.7	TSB-6027A/ BP	◎			◎	◎	2.0V,2.2KΩ	-29 ~ -47	2Cap.
8	φ9.7×4.5	TSB-9745A/BP	◎			◎	◎	2.0V,2.2KΩ	-27 ~ -49	2Cap.
9	φ12×14.3	TSB-120A31O	◎			◎		1.5V,2.2KΩ	-42 ~ -48	/

TSS-3012E

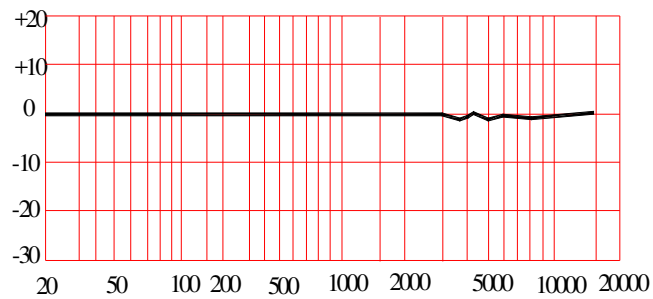
Omnidirectional Back Electret Condenser Microphone



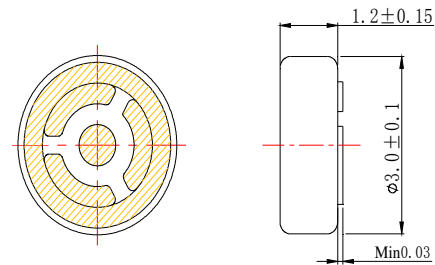
Sensitivity(1KHZ,0dB=1V/Pa)

X:-46±3dB
Y:-44±3dB
Z:-42±3dB

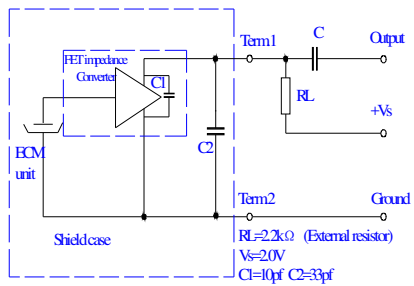
Frequency Response Curve



Dimensional(mm)



Schematic Diagram(Vs=2.0,RL=2.2kΩ)

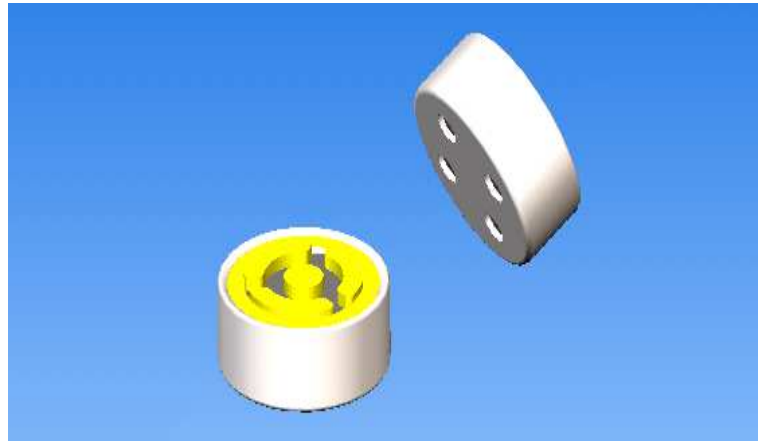


Specifications

Sensitivity:	See above
Standard operation voltage:	2V
Impedance:	Less than 2.2K Ω
Directivity:	Omnidirectional
Current reduction:	Max. 0.5mA
Sensitivity reduction:	Within 3dB at 1.5V
S/N ratio:	More than 55dB
Maximum input sound level:	110dB SPL

TSS-4012E

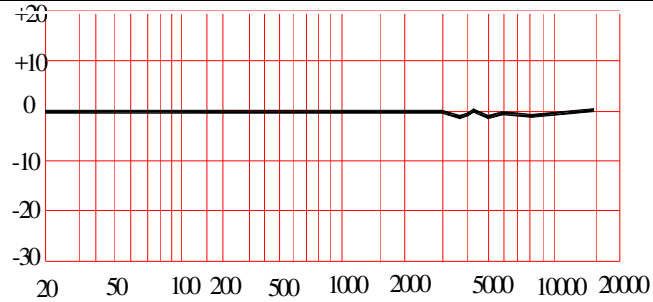
Omnidirectional Back Electret Condenser Microphone



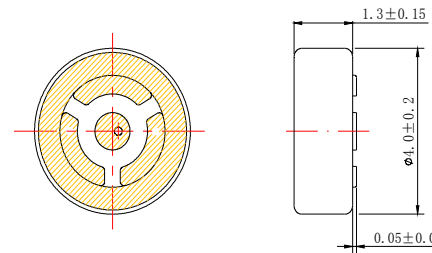
Sensitivity(1KHZ,0dB=1V/Pa)

X:-46±3dB
Y:-44±3dB
Z:-42±3dB

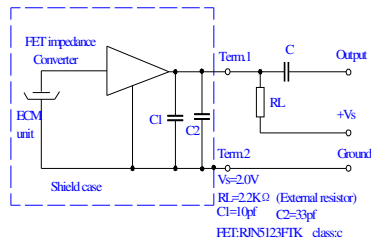
Frequency Response Curve



Dimensional(mm)



Schematic Diagram(Vs=2.0V,RL=2.2k Ω)

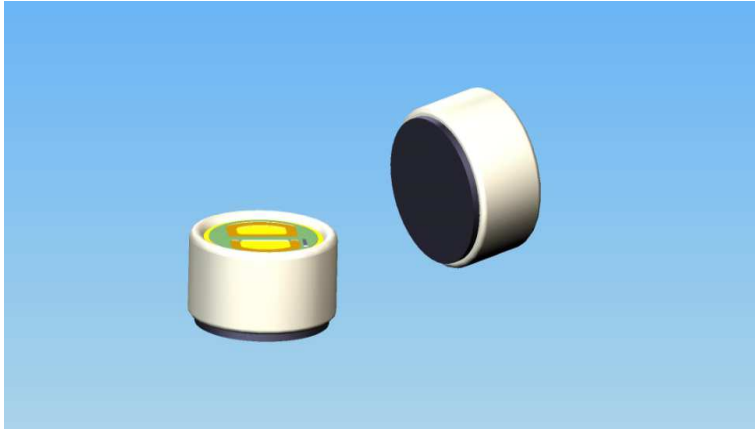


Specifications

Sensitivity:	See above
Standard operation voltage:	2V
Impedance:	Less than 2.2K Ω
Directivity:	Omnidirectional
Current reduction:	Max. 0.5mA
Sensitivity reduction:	Within 3dB at 1.5V
S/N ratio:	More than 58dB
Maximum input sound level:	110dB SPL

TSB-3015A

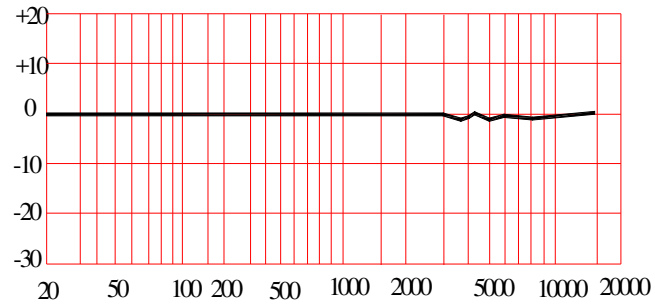
Omnidirectional Back Electret Condenser Microphone



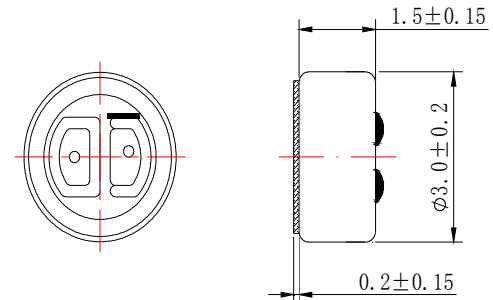
Sensitivity(1KHZ,0dB=1v/Pa)

X: $-46 \pm 3\text{dB}$
 Y: $-44 \pm 3\text{dB}$
 Z: $-42 \pm 3\text{dB}$

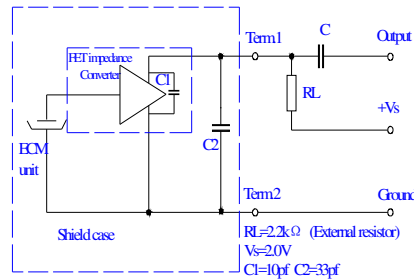
Frequency Response Curve



Dimensional(mm)



Schematic Diagram($V_s=2.0, R_L=2.2k \Omega$)

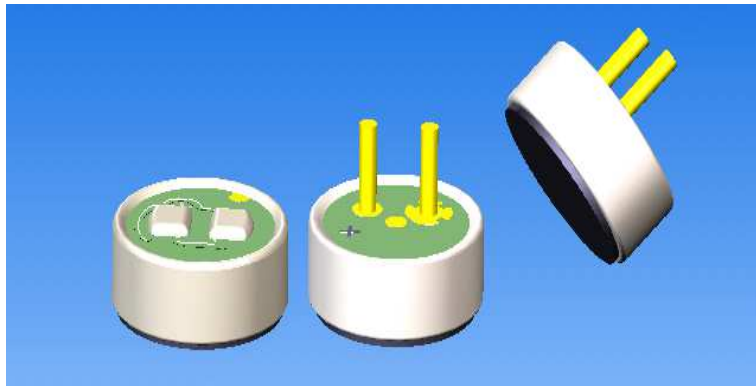


Specifications

Sensitivity:	See above
Standard operation voltage:	2V
Impedance:	Less than 2.2K Ω
Directivity:	Omnidirectional
Current reduction:	Max. 0.5mA
Sensitivity reduction:	Within 3dB at 1.5V
S/N ratio:	More than 55dB
Maximum input sound level:	110dB SPL

TSB-4015A/ BP

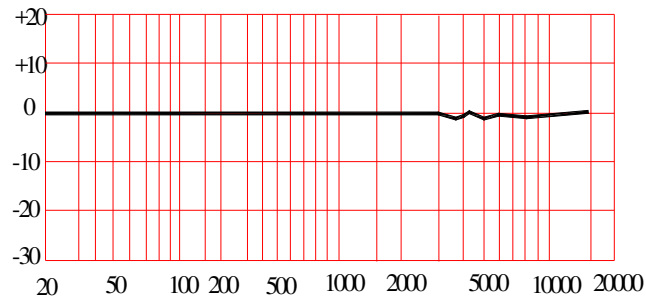
Omnidirectional Back Electret Condenser Microphone



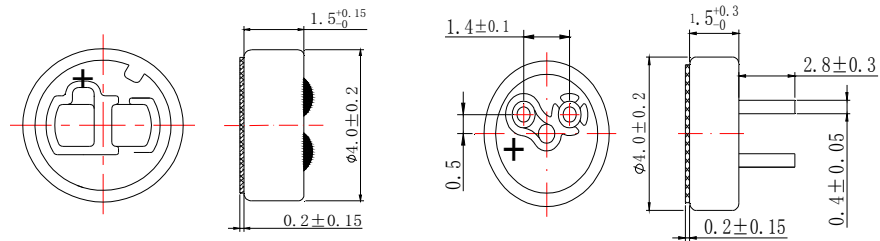
Sensitivity(1KHZ,0dB=1v/Pa)

- X: $-46 \pm 3\text{dB}$
- Y: $-44 \pm 3\text{dB}$
- Z: $-42 \pm 3\text{dB}$
- W: $-40 \pm 3\text{dB}$
- V: $-38 \pm 3\text{dB}$
- G: $-36 \pm 3\text{dB}$

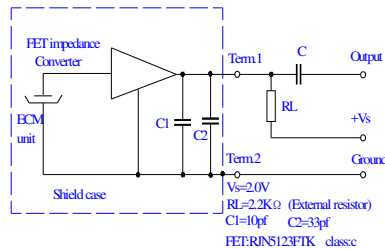
Frequency Response Curve



Dimensional(mm)



Schematic Diagram(Vs=2.0,RL=2.2k Ω)

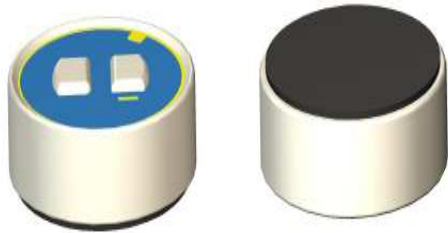


Specifications

Sensitivity:	See above
Standard operation voltage:	2V
Impedance:	Less than 2.2K Ω
Directivity:	Omnidirectional
Current reduction:	Max. 0.5mA
Sensitivity reduction:	Within 3dB at 1.5V
S/N ratio:	More than 62dB
Maximum input sound level:	110dB SPL

TSB-6018A

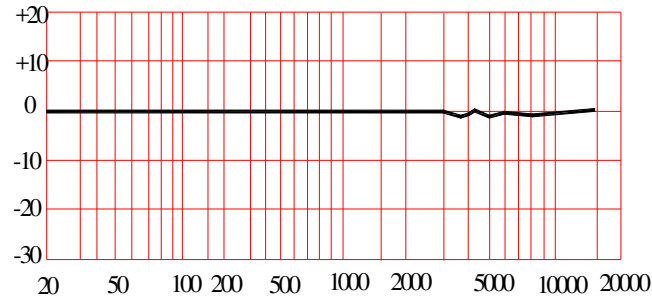
Omnidirectional Back Electret Condenser Microphone



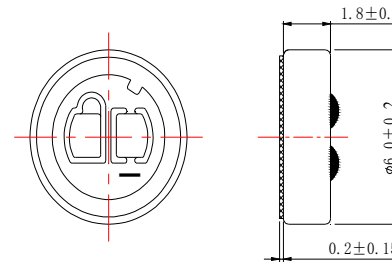
Sensitivity(1KHZ,0dB=1v/Pa)

- Y: $-44 \pm 3\text{dB}$
- Z: $-42 \pm 3\text{dB}$
- W: $-40 \pm 3\text{dB}$
- V: $-38 \pm 3\text{dB}$
- G: $-36 \pm 3\text{dB}$
- C: $-32 \pm 3\text{dB}$

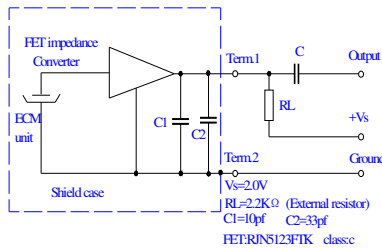
Frequency Response Curve



Dimensional(mm)



Schematic Diagram(Vs=2.0V,RL=2.2k Ω)

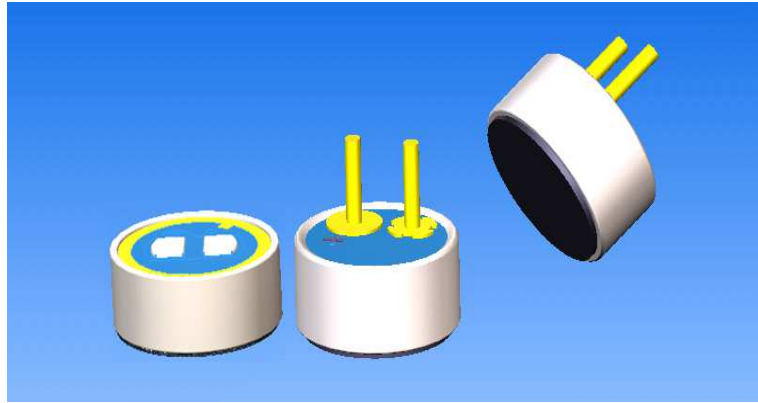


Specifications

Sensitivity:	See above
Standard operation voltage:	2V
Impedance:	Less than 2.2K Ω
Directivity:	Omnidirectional
Current reduction:	Max. 0.5mA
Sensitivity reduction:	Within 3dB at 1.5V
S/N ratio:	More than 65dB
Maximum input sound level:	110dB SPL

TSB-6022A/ TSB-6022BP

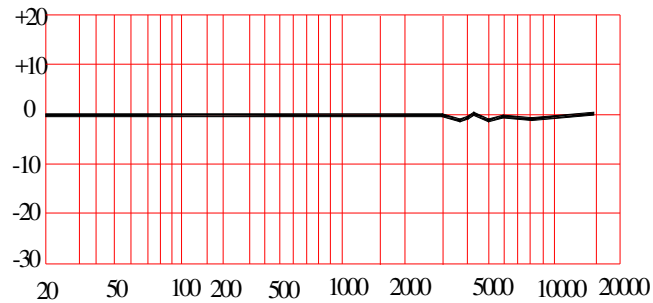
Omnidirectional Back Electret Condenser Microphone



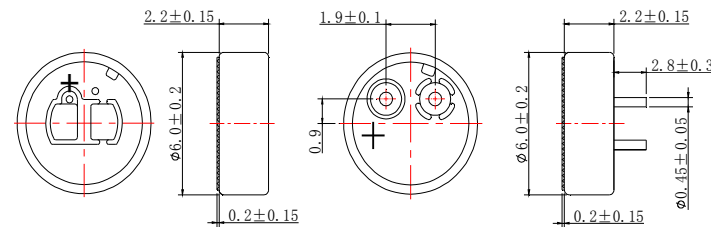
Sensitivity(1KHZ,0dB=1v/Pa)

- Y: $-44 \pm 3\text{dB}$
- Z: $-42 \pm 3\text{dB}$
- W: $-40 \pm 3\text{dB}$
- V: $-38 \pm 3\text{dB}$
- G: $-36 \pm 3\text{dB}$
- C: $-32 \pm 3\text{dB}$

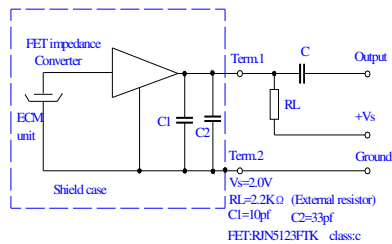
Frequency Response Curve



Dimensional(mm)



Schematic Diagram(Vs=2.0V,RL=2.2k Ω)

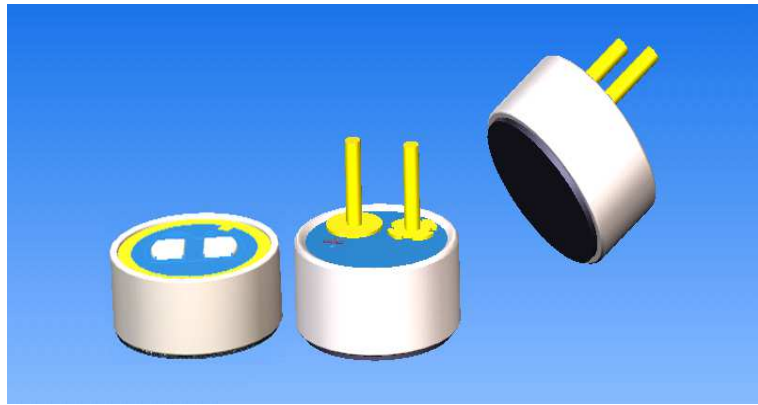


Specifications

Sensitivity:	See above
Standard operation voltage:	2V
Impedance:	Less than 2.2K Ω
Directivity:	Omnidirectional
Current reduction:	Max. 0.5mA
Sensitivity reduction:	Within 3dB at 1.5V
S/N ratio:	More than 58dB
Maximum input sound level:	110dB SPL

TSB-6027A/ TSB-6027BP

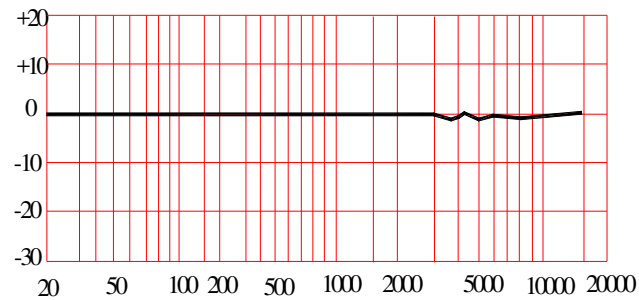
Omnidirectional Back Electret Condenser Microphone



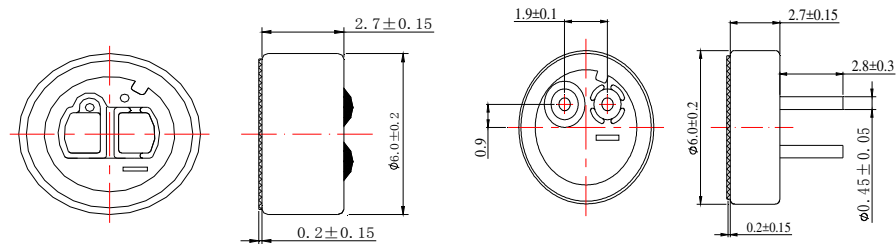
Sensitivity(1KHZ,0dB=1v/Pa)

- Y:-44 ± 3dB
- Z:-42 ± 3dB
- W:-40 ± 3dB
- V:-38 ± 3dB
- G:-36 ± 3dB
- C:-32 ± 3dB

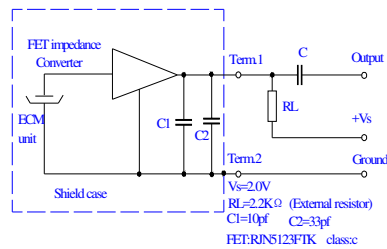
Frequency Response Curve



Dimensional(mm)



Schematic Diagram(Vs=2.0V,RL=2.2k Ω)

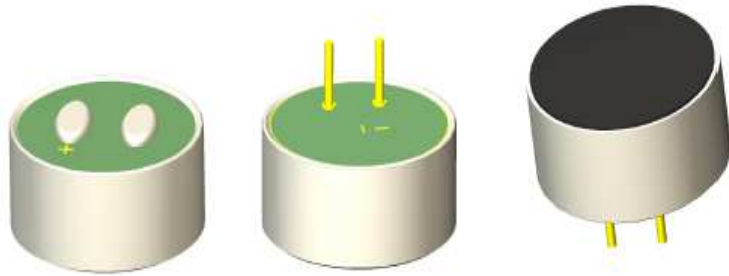


Specifications

Sensitivity:	See above
Standard operation voltage:	2V
Impedance:	Less than 2.2K Ω
Directivity:	Omnidirectional
Current reduction:	Max. 0.5mA
Sensitivity reduction:	Within 3dB at 1.5V
S/N ratio:	More than 70dB
Maximum input sound level:	110dB SPL

TSB-9745A/BP

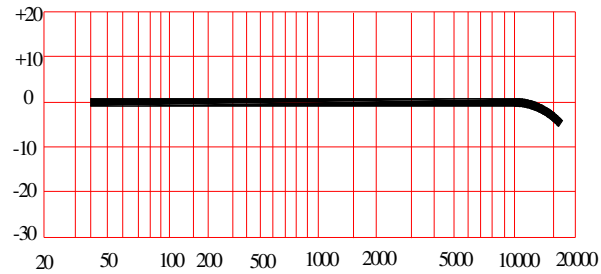
Omnidirectional Back Electret Condenser Microphone



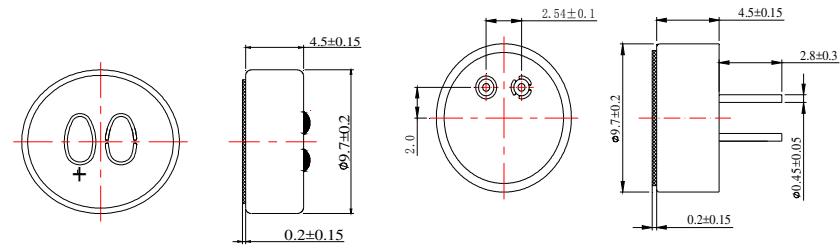
Sensitivity(1KHZ,0dB=1v/Pa)

- X:-46 ± 3dB
- Y:-44 ± 3dB
- Z:-42 ± 3dB
- W:-40 ± 3dB
- V:-38 ± 3dB
- G:-36±3dB
- A:-30±3dB

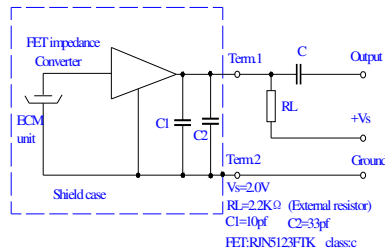
Frequency Response Curve



Dimensional(mm)



Schematic Diagram(Vs=2.0V,RL=2.2k Ω)

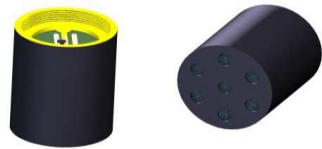


Specifications

Sensitivity:	See above
Standard operation voltage:	2V
Impedance:	Less than 2.2K Ω
Directivity:	Omnidirectional
Current reduction:	Max. 0.5mA
Sensitivity reduction:	Within 3dB at 1.5V
S/N ratio:	More than 58dB
Maximum input sound level:	110dB SPL

TSB-120A310

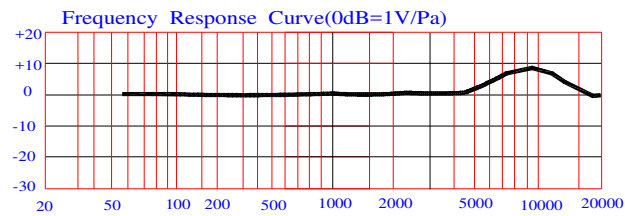
Omnidirectional Back Electret Condenser Microphone



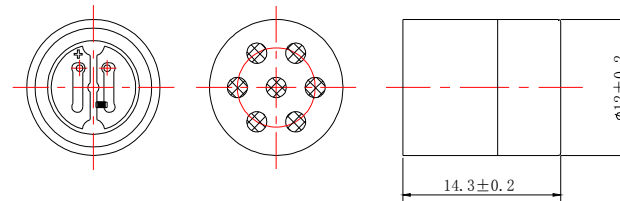
Sensitivity(1KHZ,0dB=1V/Pa)

L:-45 ± 3dB

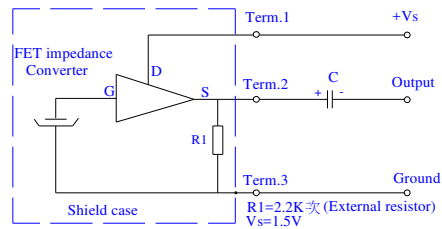
Frequency Response Curve



Dimensional(mm)



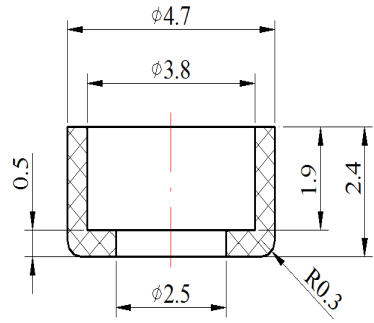
Schematic Diagram(Vs=1.5,RL=2.2k Ω)



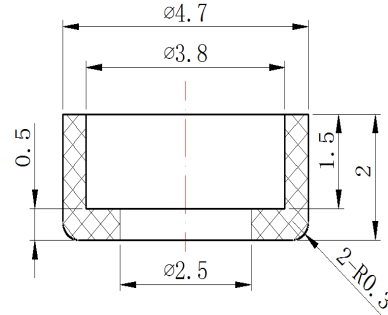
Specifications

Sensitivity:	See above
Standard operation voltage:	1.5V
Impedance:	≤ 2.2KΩ
Directivity:	Omnidirectional
Current reduction:	Max. 0.5mA
Sensitivity reduction:	≤ 3dB Vs=1.5to1.0V
S/N ratio:	≥ 60dB
Maximum input sound level:	120dB SPL

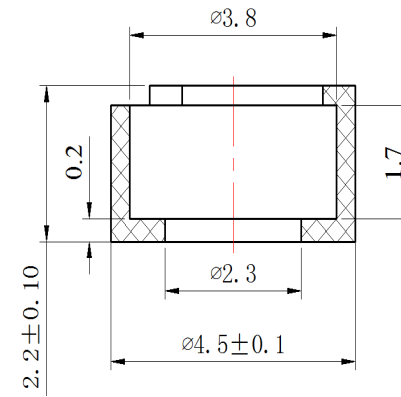
配套咪套



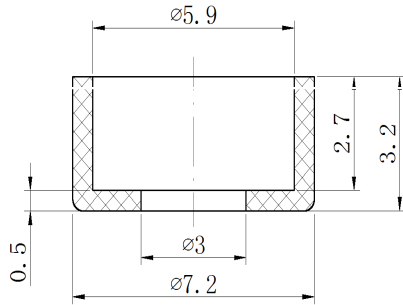
TS-MT-4015-KP01



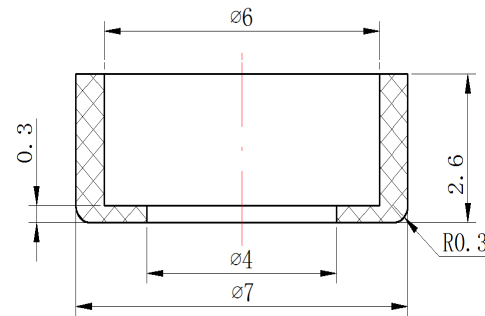
TS-MT-4013-P01



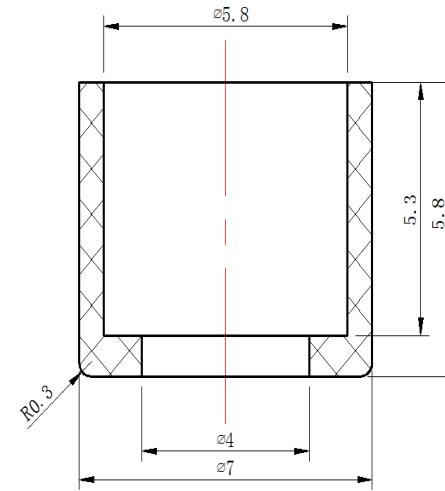
TS-MT-4015-KP06



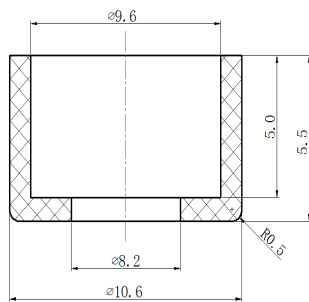
TS-MT-6027-P06



TS-MT-6022-P23



TS-MT-6050-P12



TS-MT-9750-P04