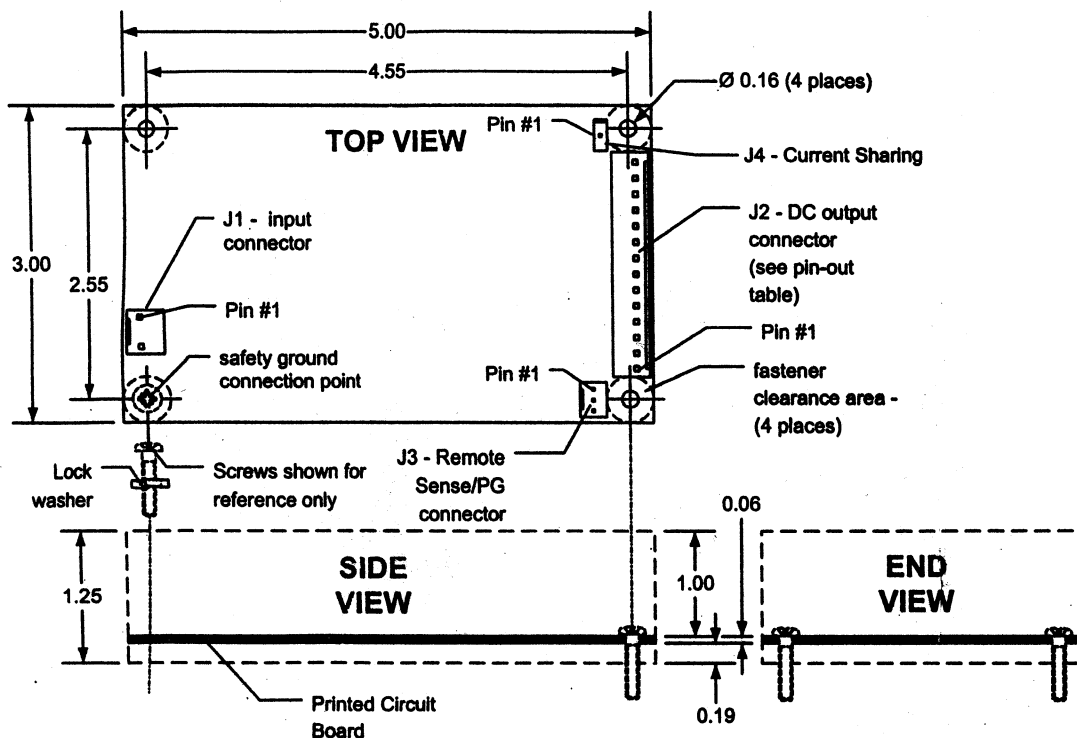


# CAT# PS-700

# INSTRUCTION SHEET Model XL125-1



J1 - XL125-1- AC I/P CONN.

Pin 1	NEUTRAL
Pin 2	missing pin
Pin 3	LINE

J2 - XL125-1 DC O/P CONN.

Pin 14	+5VDC
Pin 13	+5VDC
Pin 12	+5VDC
Pin 11	+5VDC
Pin 10	DC GND
Pin 9	DC GND
Pin 8	DC GND
Pin 7	DC GND
Pin 6	DC GND
Pin 5	+3.3VDC
Pin 4	+3.3VDC
Pin 3	+3.3VDC
Pin 2	+12VDC
Pin 1	-12VDC

J3 - XL125-1 REM SENSE/PG CONN.

Pin 1	0V sense
Pin 2	+3.3VDC sense
Pin 3	power good

J4 - XL125-1 Current Sharing

Pin 1	Current Sharing
-------	-----------------

**WARNING!** This power supply contains no user serviceable parts. Do not attempt to repair or replace any component.

1. Only qualified service personnel should handle, remove or install this power supply.
2. Ensure that the AC input mains is disconnected before installing or removing.
3. Ensure that all DC output lines are connected properly according to the table before applying the AC mains.
4. J1 is Molex connector P/N 26-62-4030 with center pin removed. Mating housing is Molex P/N 09-50-8033 and contact P/N 08-52-0113 or equivalent.
5. J2 is Molex connector P/N 26-60-4140. Mating housing is Molex P/N 09-50-8143 and contact P/N 08-52-0113 or equivalent.
6. J3 is Molex connector P/N 22-23-2031. Mating housing is Molex P/N 22-01-3037 and contact P/N 08-50-0114 or equivalent.
7. J4 is Molex connector P/N 22-28-0020. Mating housing is Molex P/N 10-11-2013 and contact P/N 08-50-0005 or equivalent.
8. Note: Use only connector numbering system as shown on this instruction sheet and is evident on the silkscreen of the PCB. Different manufacturers have different pin numbering systems.
9. Safety ground is provided at the mounting connection point as shown in the above drawing.
10. It is recommended that lock washers be used at the screw to PCB contact point and the retaining nut to chassis contact point to ensure safety ground connection.
11. An additional safety ground wire should be installed via a ring terminal secured to customer's chassis and safety ground connection contact point on the PCB. Ensure that the terminal cannot rotate so as to contact adjacent components.
12. Minimum recommended standoff height = .375".